

Wherryman's Way festival of the Yare!

sat 28 may 10am-5pm

A one day spectacular festival of the Yare Valley to celebrate the opening of the new long distance footpath stretching 35 miles from Norwich to Great Yarmouth.

Free walks maps and route guide from Broads Authority Rangers at main venues.

Whitlingham Country Park and Trowse

- * Raindrop Kite Theatre at Whitlingham Country Park at 11am, 1pm and 3pm.
- * Craft Connections Exhibition, Manor Rooms, Trowse, 10am to 4.30pm. Free.
- * Keith Skipper and Friends in the marquee on Trowse Common. Tickets £7, conc £5 from Tony Johnson on 01603 633874.

Bramerton

- * Waterskiing display 12 noon to 2pm.
- * Crude Apache Theatre Company presents 'Billy Bluelight' at 2pm and 6pm, Woods End.

Surlingham

- * RSPB guided walk around the marsh starting from the Ferry House. 2pm to 5pm. Book in advance on 01603 715191. £5 adult, £3 child.
- * Surlingham Church open to the public, with a film show of archive photographs of old Surlingham.

Coldham Hall Tavern

- * Free viewing of 100-year old wherry Hathor. Come aboard and look around.
- * Free ferry service from Brooms Boatyard, Brundall to Coldham Hall Tavern.

Surlingham Ferry House

- * Morris dancers at 12 noon, 2pm and 3.30pm and the Red Herrings ceilidh band from 12.30pm.
- * Ted Ellis Trust Nature Reserve, Wheatfen: displays and refreshments 10am - 4pm.

Rockland St Mary

- * Join Rockland Naturalists and the RSPB for a dawn chorus walk around the Broad. 5.30am to 7.30am. £6 including breakfast. Advance booking essential tel 01508 538069.
- * Guided walk with the RSPB starting from Rockland Staithe. 11am to 1pm. Book in advance on 01603 715191. £5 adults, £3 children.
- * Canadian Canoe trails with Active-8 Activities. Fully qualified instructors will give you some basic training and lead you on a tour of the Broad. At 11am, 1.30pm and 4pm. £10 adult, £5 child (family ticket available). Book in advance on 01502 713196.

Loddon Staithe

- * Music from Swerby World, the 'Gentlemen of Jive' at 12 noon, 1.30pm and 3pm. Free
- * Loddon Local History Society display 11am - 2pm.

Reedham Quay

- * A Wherryman Mardler will be telling local tales from times gone by.
- * 1925 steam boat Southern Belle - restoration project on display.
- * Barbecue courtesy of Reedham Community Association and Parish Council. Plus bric-a-brac stall from the Women's Royal British Legion.

Getting about

Free minibus from Whitlingham Country Park to main venues along the route to Claxton. Or take the train to Brundall for the free ferry to the Coldham Hall Tavern at Surlingham, or continue by train to Reedham.

Free landrover rides between Loddon Staithe and Reedham Quay.

Or take the river bus - special service from Norwich Elm Hill Quay and Station Quay to Whitlingham Country Park and Bramerton. Tel 01603 701701 for river bus timetable.

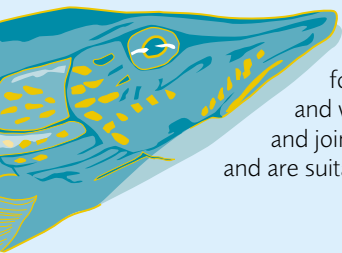
theatre on tour

... all free ... bring a rug to sit on

Crude Apache Theatre Co.

Billy Bluelight has become a legendary character in the folklore of Norwich and the Broads. The story of this eccentric individual is told in this outdoor theatre performance, touring as part of the celebrations of the launch of the Wherryman's Way.

Nutmeg Puppet Company



Come and see the new show for the best in Broads characters and wildlife, with plenty of humour and joining in! Shows last 45 minutes and are suitable for all the family.

Spin-Off Theatre Company

More smuggling, jazz, myths and mayhem as Spin-Off Theatre brings you a 1920's musical comedy woven from local history, words and intrigue. As we join the story, Landlady Ma Storm has just discovered that her only love has double crossed her and run away with their ill-gotten gains. How will she find him and bring him back in time to pay off the gangsters who are hounding her? Time is running out! Fun for all the family, with songs and frolics from a period of unparalleled frothiness! For more details contact Spin-Off Theatre Company on 01603 663676.

★ Billy Bluelight ★

may

sat 28 2pm & 6pm · Bramerton Woods End

tue 31 7pm · Rockland St Mary Staithe

june

wed 1 7pm · Coldham Hall Tavern, Surlingham

fri 3 7pm · Reedham Quay

sat 4 2pm · Chedgrave Pits

sun 5 2pm · Whitlingham Country Park

august

wed 10 3pm · Chedgrave Pits

thu 11 11.30am & 3pm · Reedham Quay

sun 14 11.30am · Bramerton Woods End

thu 18 11.30am & 3pm · Whitlingham Country Park

sun 21 11.30am & 3pm · Ferry House, Surlingham

tue 23 3pm · The Reedcutters, Cantley

★ Snapped Again ★

august

wed 3 6pm · Whiffler Theatre, Castle Grounds, Norwich

thu 4 6pm · Whiffler Theatre, Castle Grounds, Norwich

thu 11 6pm · Reedham Ferry

fri 12 6pm · Pitts Lane, Loddon

sat 13 1pm · Coldham Hall Tavern, Surlingham

sat 13 6pm · Bridge Inn, Acle

wed 17 6pm · Cow Tower, Norwich

fri 19 1pm · Forum Amphitheatre, Norwich

sat 20 6pm · Ferry House, Surlingham



wherry tour

Experience a taste of the wherryman's life with a trip on an Edwardian pleasure wherry or wherry yacht.

Wherries Hathor and Olive will offer sailings on the River Yare, plus the chance to come aboard for a look round these fascinating historic boats when they are moored up.

Further information: get a leaflet and booking form from any Broads Information Centre; telephone the Broads Authority on 01603 610734. www.broads-authority.gov.uk

Welcome aboard ... look round the wherries. FREE

- wed 10 2.30-6pm · Loddon Staithe
- thu 11 10.30am-5pm · Reedham Quay
- fri 12 12.30-2pm · Hardley Staithe
- sat 13 10am-4pm · Coldham Hall Tavern, Surlingham (plus wherry trips)
- sun 14 11am-1.30pm · Woods End, Bramerton
- mon 15 12.30-3.30pm · Thorpe Green
- tues 16 10am-4.30pm · Pulls Ferry, Norwich
 6.30-9pm · Ribs of Beef, Norwich
- wed 17 11.30am-3.30pm · Norwich Riverside
- thu 18 10am-4pm · Whitlingham Country Park (plus wherry trips)
- fri 19 6.30-9pm · Beauchamp Arms, Claxton
- sat 20 11am-1pm · Rockland Staithe
 3.30-8pm · Ferry House, Surlingham
- sun 21 11am-5pm · Ferry House, Surlingham (plus wherry trips)
- mon 22 11am-2.30pm · Ferry House, Surlingham
 6.30-9pm · Langley Dyke
- tues 23 12.30-2.30pm · Reedcutters, Cantley
- wed 24 11am-5pm · North Quay, Great Yarmouth

other events

june



wed 1 7.30-8.30pm

Aren't the Broads Brilliant?

Loddon (meet at staithe car park)

Find out all about the Broads and why it's so special with this relaxed, family friendly stroll with a Broads Authority Ranger around this pretty market town. BRING: stout shoes or boots. CONTACT: Beccles Broads Information Centre 01502 713196. FREE

sat 4 9pm until late!

Bat and Moth Night

Whitlingham Country Park (meet Great Broad car park)

Come and see the creatures of the night as we search out moths and bats. CONTACT: Beccles Broads Information Centre 01502 713196. COST: adult £2, child £1.

sat 11 8-10.30am

Wetland Wonderland

RSPB Strumpshaw Fen, nr Brundall

An introduction to the resident birds of the fens and reed-beds, with spring migrant birds and displaying marsh harriers among the wetland wildlife that may be encountered. BOOK IN ADVANCE: RSPB 01603 715191. COST: adult £5, child £3 (member £3/1.50).

sun 12 10am onwards

Swallowtail Day

Ted Ellis Nature Reserve, Wheatfen, Surlingham

Walks throughout the day to see the swallowtail butterflies. Displays; tea and cakes for sale. BRING: wellies. CONTACT: David Nobbs, Ted Ellis Trust 01508 538036. FREE (donations welcome).

wed 15 7.45pm

Morris Dancing

Reedcutters, Cantley

july

sat **18** 9.30~11am

Orchid Meadows

RSPB Strumpshaw Fen, nr Brundall

Walk with a warden through Strumpshaw's orchid filled fen meadows to learn about the amazing variety of plants that thrive here. Suitable for all the family.

BOOK IN ADVANCE: RSPB 01603 715191.

COST: adult £5, child £3 (member £3/1.50).

sun **19** 1~3.30pm

Butterfly and Dragonfly Safari

RSPB Strumpshaw Fen, nr Brundall

A walk in search of Broads butterflies and dragonflies.

BOOK IN ADVANCE: RSPB 01603 715191. COST: adult £5,

child £3 (member £3/1.50). Will not run in bad weather.

tues **21** 7~8.30pm

Aren't the Broads Brilliant?

from the **Reedcutters Pub, Cantley**

Find out all about the Broads on a stroll around Cantley marshes with a Broads Authority Ranger. CONTACT: Beccles Broads Information Centre 01502 713196. FREE

sat **25** to sun **26** 10am~4.30pm

Craft Connections Exhibition

Village Hall, Cookes Road, Bergh Apton

Features new work by six contemporary artists inspired by traditional Norfolk craft skills. Work on sale. Hands-on display. Refreshments available. CONTACT: Rosie Evans, Creative Arts East 01953 713390. FREE

sat **25** gates open 6pm

Langley Hall Prom in the Park

Langley Hall, Loddon

Enjoy many different styles of music in the magnificent setting of the hall and gardens. Finishing with a 'Last Night of the Proms' finale with full symphony orchestra and fireworks display. CONTACT: Andrew Barclay 01508 520210. COST: adult £17.50, child £8.50.

sun **26** 9.30~11am

Orchid Meadows

RSPB Strumpshaw Fen, nr Brundall (see Sat 18 June).

sat **2** 1~3.30pm

Butterfly and Dragonfly Safari

RSPB Strumpshaw Fen, nr Brundall (see Sun 19 June).

sun **3** 10am onwards

Artists' Day

Ted Ellis Nature Reserve,

Wheatfen, Surlingham

A day for drawing/painting with like-minded people on this special nature reserve. Tea and cakes for sale.

CONTACT: Johanna Labbe, Ted Ellis Trust 01603 614024.

FREE (donations welcome).

sun **3** 2pm

Great Yarmouth Heritage Walk

from **Wrestlers Pub car park, Market Street, Yarmouth**

Join Great Yarmouth Heritage Town Guides for a 2 hour walk in Nelson's footsteps looking at the places Nelson visited during his stays in Great Yarmouth. Also includes a visit to Nelson's monument, one of the earliest and finest tributes to the 'Norfolk Hero'. Return transport available from Norwich. BOOK IN ADVANCE: Norfolk County Council 01603 222769. COST: adult £2 conc. £1.

tues **5** 2pm

Yarmouth Heritage Walk

from **Wrestlers Pub car park, Market Street,**

Yarmouth (see Sun 3 July).

thu **7** 7.30~8.30pm

Aren't the Broads Brilliant?

meet at **Loddon Staithe car park** (see Wed 1 June).

sat **9** 9~11pm

A Moth Trapping Evening on National Moth Night

RSPB Strumpshaw Fen, nr Brundall

Join a warden for an evening of moth trapping, with the previous night's catch to investigate. Short evening walk. Light trap running until the end of the event. Refreshments provided.

BOOK IN ADVANCE: RSPB 01603 715191.

COST: adult £6, child £4 (member £4/2).

sun **10** 10am

Wild Flowers Day Course

Ted Ellis Nature Reserve, Wheatfen, Surlingham

A full day course with Richard Hobbs and Bob Ellis. BOOK IN ADVANCE: David Nobbs, Ted Ellis Trust 01508 538036. COST: £15 including tea and coffee.

sun **10** 11am~11pm

Loddon Carnival

Jubilee Hall, George Lane, Loddon

Celebration of 60th Anniversary of VE/VJ Day. Carnival procession, Loddon 5 km road race (visitors welcome to take part), fête, children's attractions. Food and drink available all day. Live band in the evening. Free parking and free mooring available. CONTACT: Tony Swan 01508 522020. FREE

sun **17** 7.30~10pm

Nocturnal Nature

RSPB Strumpshaw Fen, nr Brundall

A walk in search of the birds and wildlife of the woods, meadows and reed-beds of the Broads at dusk. BOOK IN ADVANCE: RSPB 01603 715191. COST: adult £5, child £3 (member £3/1.50).

thu **21** 8.45~10.30pm

Bat and Moth Evening

Chedgrave Common

A full moon and clear skies? We really hope so for this unique event on this lovely common that lies alongside the River Chet. A bat and moth expert will be on hand to help us discover mysterious nocturnal life with moth traps and bat detectors - an amazing glimpse into another world. BOOK IN ADVANCE: Beccles Broads Information Centre 01502 713196. COST: £2.

sun **24** 10am~4pm

Digital Photography Workshop

Ted Ellis Nature Reserve, Wheatfen, Surlingham

A full day's course with expert Richard Nunn. Full details available on request. BOOK IN ADVANCE: David Nobbs, Ted Ellis Trust 01508 538036. COST: £20 including tea and coffee.

mon **25** 1.30~4.45pm

Whitlingham by Boat and Boot

from **Norwich** (meet Station Quay opposite Norwich Railway Station)

Join the Country Park Ranger for a cruise along the River Yare to Whitlingham Country Park, where we will disembark for a stroll around the Great Broad before boarding the river bus to return to Norwich. BOOK IN ADVANCE: Beccles Broads Information Centre 01502 713196. COST: adult £7, child £5.

sat **30** & sun **31**

Dragon Boat Racing

Whitlingham Country Park, Trowse

All day community event in support of the Anthony Nolan Trust. Enter a team of 10 paddlers and drummer - junior event Saturday and senior event Sunday. Prizes for winners. CONTACT: Trudy Thomas 01328 701171.

august

tues **2** hourly sessions
from 10am, 11am and 12 noon

Pond Dipping

Whitlingham Marsh

(at far end of Whitlingham Country Park)

Join the Country Park Ranger and the Fringe Project Warden for a morning of pond dipping to see what really lives under the water in the marsh dykes. BOOK IN ADVANCE: Norwich Fringe Project 01603 423303. COST: £1 per child.

sun **7** 10am onwards

Natural History Day

Ted Ellis Nature Reserve, Wheatfen, Surlingham

A selection of exhibits, short walks and talks, plus a chance to meet local naturalists. Held in conjunction with the Norfolk and Norwich Naturalists' Society. BOOK IN ADVANCE: David Nobbs, Ted Ellis Trust 01508 538036. FREE (donations welcome).

sat **13** 1.30~3pm

Norwich City Walk

from **Bishopgate, Norwich**

(meet Adam and Eve pay and display car park)

This 1½ hour walk will look at many aspects of historic Norwich and its links with Nelson and the past. After the walk take advantage of an opportunity to visit the Castle Museum at a reduced entrance fee. BOOK IN ADVANCE: Norfolk County Council 01603 222769. COST: adult £2, child/conc £1.

sat **13** 10am~4pm

Mid-Yare Nature Reserve Open Day

RSPB Strumpshaw Fen, nr Brundall

Join RSPB staff and volunteers for a celebration of the best of Broads wildlife with a day of fun filled activities. Suitable for all the family. CONTACT: RSPB 01603 715191. COST: Free entry to reserve, small charge for some activities.

sun **14** 2~5pm

Children's activity afternoon: Box Building

Ted Ellis Nature Reserve, Wheatfen, Surlingham

Come and join us for an afternoon of bird, bat or ladybird box building - take your pick! CONTACT: David Nobbs, Ted Ellis Trust 01508 538036. COST: £2.50 per box.

wed **17** 1.30~3pm

Norwich City Walk

from **Bishopgate, Norwich**

(meet Adam and Eve pay and display car park - see Sat 13 August).

thu **18** 10am~4pm

Go Wild at Whitlingham!

Whitlingham Country Park, Trowse

Activities will be on offer to help you enjoy this taste of the Broads on Norwich's doorstep. Celebrate the completion of the country park's two broads, water activities centre and visitor centre. Wherry trips, landrover safaris, sailing and canoeing taster sessions, children's activities and shows from Nutmeg Puppet Company and Spin-Off Theatre company. Plus kite storytelling, wherryman mardler and music. CONTACT: Broads Authority 01603 610734 for full details. COST: Free entry to park, small charge for some activities including boating.

sun **21** 9.30am~2.30pm

Wherry Walk

Whitlingham Country Park

(meet at Great Broad car park)

Begin a wherry walk with a wherry trip! After a half hour sail from Surlingham we will begin our walk along the newly opened Wherryman's Way footpath, exploring the 5½ mile section back to Whitlingham. BRING: packed lunch/drink (or buy at pub), stout shoes or boots. BOOK IN ADVANCE: Beccles Broads Information Centre 01502 713196. COST: adult £7, child £4.

september

sat **3** 2.30~4.30pm

Surlingham Village Fair

**Padmaloka Buddhist Retreat Centre,
The Green, Surlingham**

Activities for all ages including children's games, stalls, teas, garden produce and plants, book sale and tombola.
www.eastspace.net/surlingham

fri **9** to sun **11**

Reedham Ferry Folk Festival

Concerts and ceilidhs, sessions and sing-a-rounds, plus beer tent, workshops, showcase, children's activities, folk dance displays and craft stalls. All held under canvas in a beautiful Broads setting.
www.reedhamferryfolkfestival.co.uk

sat **10** to sun **11**

Great Yarmouth Maritime Festival

South Quay

A spectacular weekend celebrating the borough's seafaring heritage and fishing industry with a mixture of maritime crafts, music, visiting vessels, costumed characters, heritage tours, fresh fish stalls and shantymen singing traditional folk songs.

CONTACT: www.great-yarmouth.co.uk FREE

sat **17** 10am~1pm

Late Summer Wherryman's Way Walk

from **Rockland St Mary** (meet at car park)

Join the Broads Authority Ranger for this 4½ mile guided walk around the edge of the lovely broad at Rockland and out, into the wild landscape of this part of the River Yare.
BOOK IN ADVANCE: Beccles Broads Information Centre on 01502 713196. COST: adult £3, child £1.

sun **18** 2~4pm

Fungus Workshop

Ted Ellis Nature Reserve, Wheatfen, Surlingham

Enjoy an afternoon with the Norfolk Fungus Study Group.
CONTACT: David Nobbs, Ted Ellis Trust 01508 538036.
COST: £2.50 including tea and coffee.

tues **20** 10am~12 noon

Quarry Safari

Whitlingham Country Park (meet Great Broad car park)

Take a trip around Whitlingham looking at how the area has changed from a quarry to a country park. Then climb aboard a landrover for a safari around the working quarry to see how the broads were created. BOOK IN ADVANCE: Beccles Broads Information Centre 01502 713196.
COST: adult £3, child £2.

sat **24** 7.30pm

Bat Evening

Ted Ellis Nature Reserve, Wheatfen, Surlingham

Enjoy an evening learning more about these nocturnal creatures. BOOK IN ADVANCE: David Nobbs, Ted Ellis Trust 01508 538036. COST: £5 including hot dogs.

The Wherryman's Way was funded by ...

